

STANDARD DEPARTURE  
CHART- INSTRUMENT  
(SID) - ICAO

TRANSITION ALTITUDE  
10000 FT

URDZHAR TOWER 123.0

BURID 1E, NINKO 1E

URDZHAR  
RWY 25

CHANGE: New chart.

DIST IN NM  
ALT, ELEV IN FT  
BRG ARE MAGNETIC  
VAR 5°E

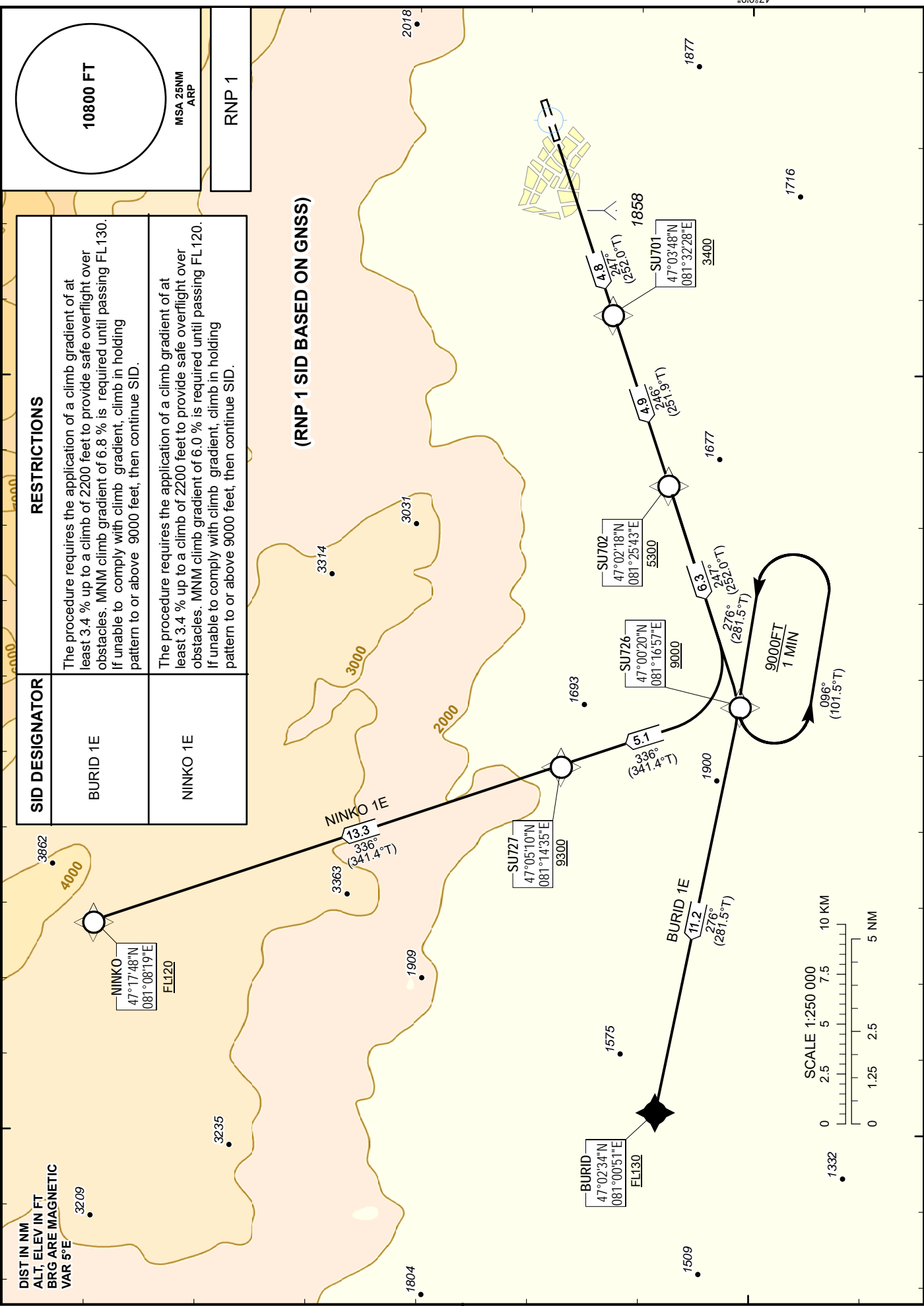
SID DESIGNATOR	RESTRICTIONS
BURID 1E	The procedure requires the application of a climb gradient of at least 3.4 % up to a climb of 2200 feet to provide safe overflight over obstacles. MNM climb gradient of 6.8 % is required until passing FL130. If unable to comply with climb gradient, climb in holding pattern to or above 9000 feet, then continue SID.
NINKO 1E	The procedure requires the application of a climb gradient of at least 3.4 % up to a climb of 2200 feet to provide safe overflight over obstacles. MNM climb gradient of 6.0 % is required until passing FL120. If unable to comply with climb gradient, climb in holding pattern to or above 9000 feet, then continue SID.

10800 FT

MSA 25NM  
ARP

RNP 1

(RNP 1 SID BASED ON GNSS)



**TABULAR DESCRIPTION**

BURID 1E RWY25											
Serial Number	Path Descriptor	Waypoint Identifier	Fly - over	Course M°(T°)	Magnetic Variation(°)	Distance (NM)	Turn Direction	Altitude (FT)	Speed (KT)	VPA (°)	Navigation Specification
010	CF	SU701	-	247(252.0)	+5.4	4.8	-	+3400	-	-	RNP 1
020	TF	SU702	-	246(251.9)	+5.4	4.9	-	+5300	-	-	RNP 1
030	TF	SU726	-	247(252.0)	+5.4	6.3	-	+9000	-	-	RNP 1
040	HM	SU726	-	276(281.5)	+5.4	-	L	+9000	-	-	RNP 1
050	TF	BURID	-	276(281.5)	+5.4	11.2	-	+FL130	-	-	RNP 1

NINKO 1E RWY25											
Serial Number	Path Descriptor	Waypoint Identifier	Fly - over	Course M°(T°)	Magnetic Variation(°)	Distance (NM)	Turn Direction	Altitude (FT)	Speed (KT)	VPA (°)	Navigation Specification
010	CF	SU701	-	247(252.0)	+5.4	4.8	-	+3400	-	-	RNP 1
020	TF	SU702	-	246(251.9)	+5.4	4.9	-	+5300	-	-	RNP 1
030	TF	SU726	-	247(252.0)	+5.4	6.3	-	+9000	-	-	RNP 1
040	HM	SU726	-	276(281.5)	+5.4	-	L	+9000	-	-	RNP 1
050	TF	SU727	-	336(341.4)	+5.4	5.1	-	+9300	-	-	RNP 1
060	TF	NINKO	-	336(341.4)	+5.4	13.3	-	+FL120	-	-	RNP 1

**WAYPOINT COORDINATES**

Waypoint Identifier	Coordinates	
DER	470517.65N	0813907.80E
SU701	470348.38N	0813227.89E
SU702	470217.52N	0812542.98E
SU726	470020.39N	0811657.49E
SU727	470510.34N	0811434.59E
BURID	470234.00N	0810051.00E
NINKO	471748.00N	0810819.00E